

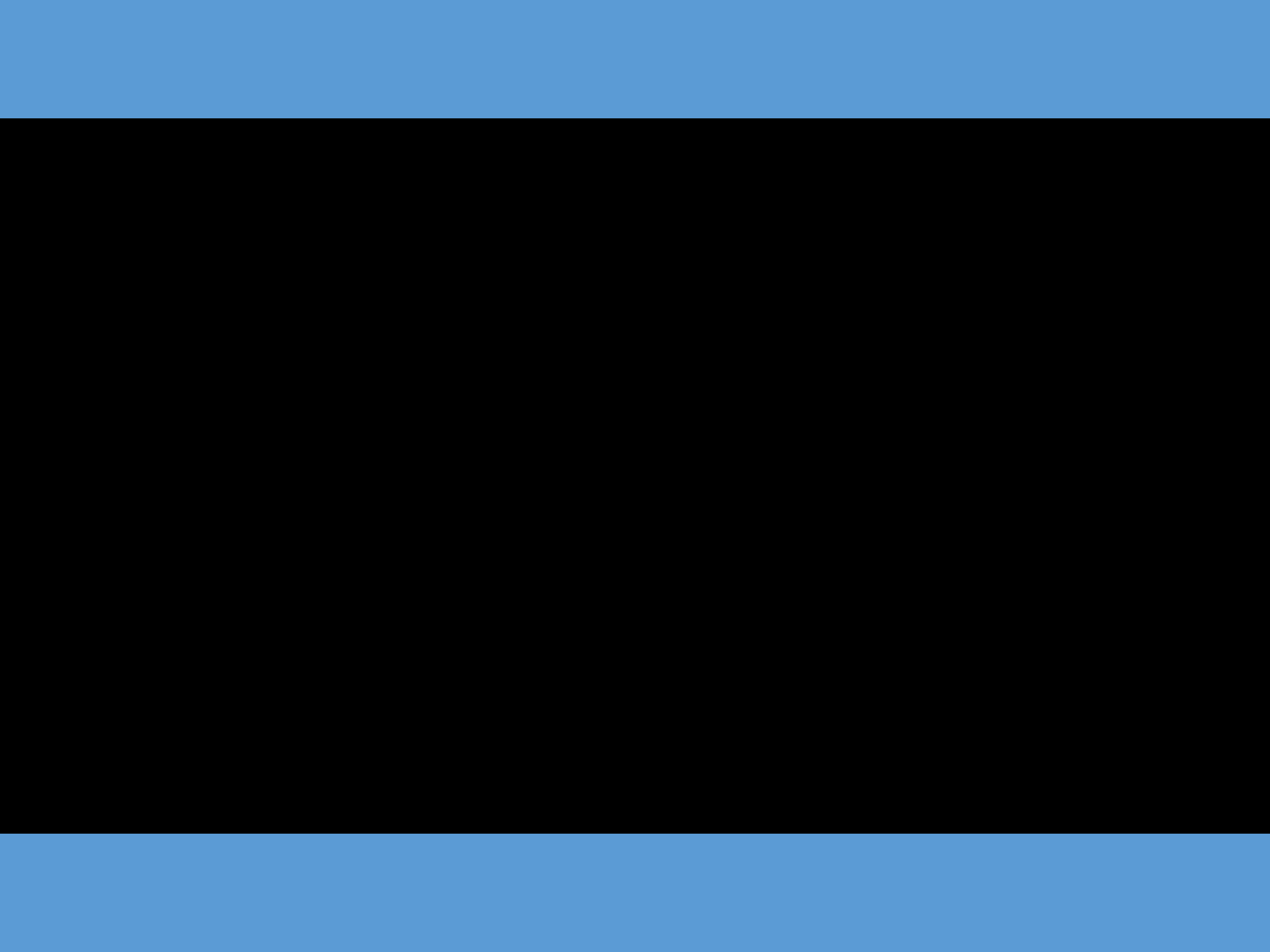


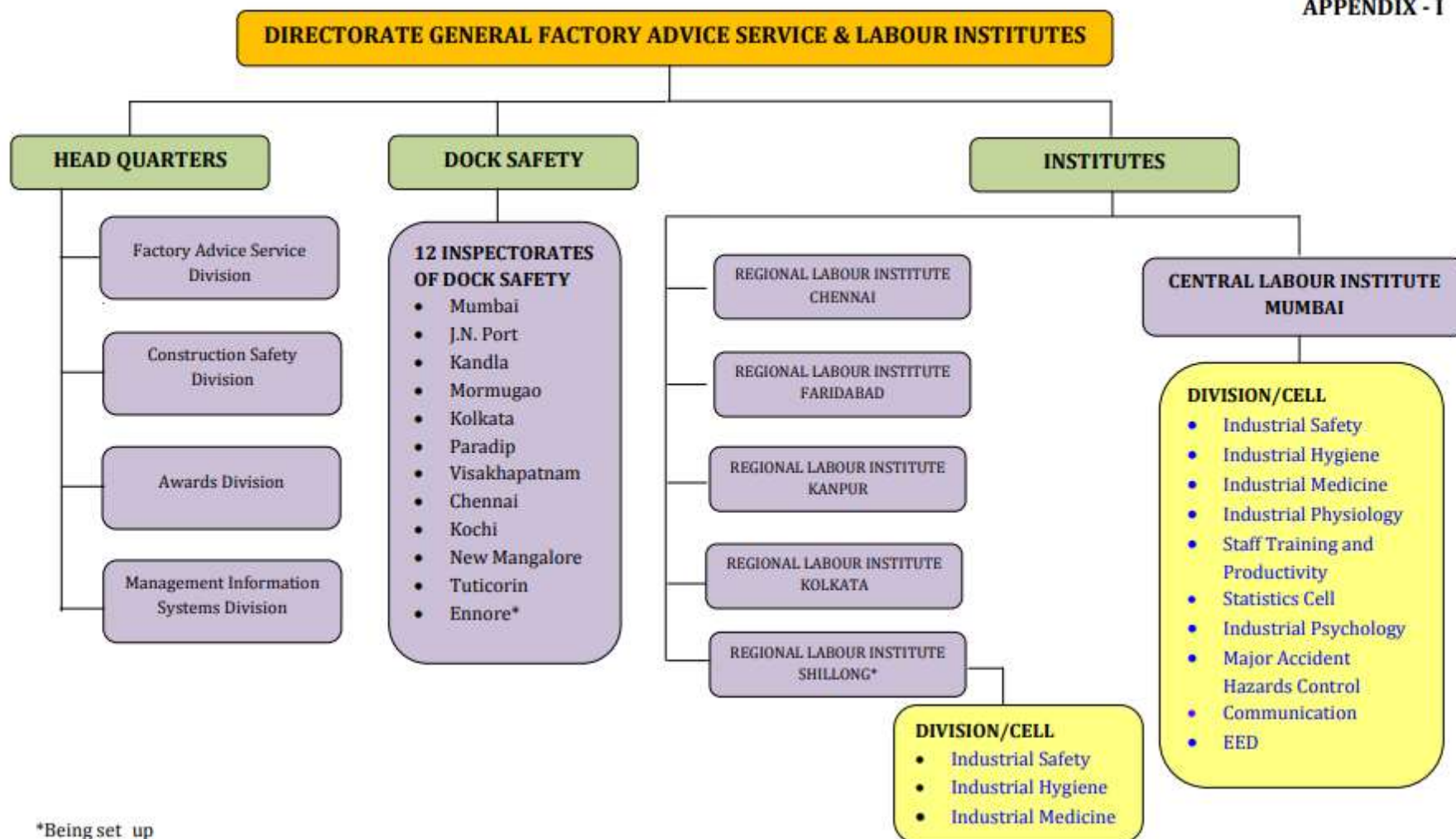
# **PARADIP PORT TRUST**

## **Welcomes...**

**10<sup>th</sup> Odisha State Safety Conclave and  
Kalinga Safety Award**

**Hotel New Marion  
Bhubaneswar  
22 – 23 Nov' 2019**





\*Being set up

**ACT 1986**

**DOCK WORKERS REGULATION 1990**

## **EFFECTIVE SAFETY MEASURES ADOPTED IN PARADIP PORT TRUST**

- The Safety & Health policy of Paradip Port Trust has been framed & implemented.
- The Safety Committee under the Chairmanship of Chairman, PPT conducts Safety Committee Meeting quarterly with Safety Committee Members, representatives from Port Trust, Port Users, Labour Unions, representatives of neighboring Industrial establishments & Inspector of Dock Safety.
- The Safety activities, suggestions & recommendations reviewed regularly by the Safety Committee.
- Internal and External Safety Audits are being carried out regularly by external Govt. experts.
- Internal Safety Inspection system has been strengthened with Safety inspection checklist.
- The reporting of accidents and dangerous occurrences are being monitored.
- Safety Cell carry out investigations of all the accidents and dangerous occurrences inside the Port Prohibited area and suggest the remedial measures which are being reviewed by the Safety Committee & implemented to prevent the recurrence of similar types of accidents in Port in future.
- Periodical supply of BIS standard PPEs to the Port & Dock workers, Officers ,CFH workers, Contractual Workers and all the personnel deployed by the stakeholders are carried out.
- Regular periodical Safety Training to the Employees, Dock Workers & Contractual workers of the Port Trust and that of it's Stake Holders including Supervisors of Stevedores, Operators of Heavy Equipment, Drivers of Intra Port Transportation Dumpers etc to improve their knowledge, skill and attitude towards Safety.Fire and First –aid –Training to all the personnel and Loalties carried out to create awareness amongst all the Township personnel.

## **EFFECTIVE SAFETY MEASURES ADOPTED IN PARADIP PORT TRUST**

- Occupational Safety & Health studies /surveys/workshops are being arranged for improvement of the knowledge & skill of the port & dock workers.
- The existing unsafe conditions & unsafe actions at different work places of the port are identified & intimated to the concerned authorities for compliance almost on daily basis and reviewed by the Competent Authority.
- Breath Analyzers have been procured for detection of alcohol consumption by the persons working inside the port area, all the Gates, Medical & other working areas. Regular frequent checking is being carried out and punitive measures taken.
- Compulsory uses of PPEs along with Safety helmet, safety shoe & fluorescent jackets by all the persons entering the dock area. Without putting on necessary PPEs nobody is allowed inside the Port Prohibited Area.
- Paradip Port Trust has been taking punitive measures against the erring drivers, helpers & owners of the transport & cargo handling equipment and motorized vehicles violating the Safety and Traffic Rules.
- Maximum speed limit for different types of vehicles inside dock area have been fixed at 20 KMPH and for very heavy vehicles i.e- Excavators, Rollers etc at 05 KMPH.
- SOP and Work Permit system is followed in all the operational activities.
- Adequate road Location Signage & Safety Signage's along with road safety slogan, safety pictures and speed limit indicators have been displayed inside the Port at conspicuous places.

## **EFFECTIVE SAFETY MEASURES ADOPTED IN PARADIP PORT TRUST**

- Erring dumpers, trucks, trailers & their drivers & helpers are being penalized and after 03 similar offences they are debarred to enter the Port Prohibited Area by marking in RFID System.
- Regulating the entry & exit through RFID System has been adopted for the cargo handling trucks/dumpers into/from the dock are of the port & their movement inside it.
- Speed Governors have been fitted in all the IPT Dumpers plying inside Port Prohibited Area.
- Adequate parking yards have been earmarked for outside trucks and IPT Dumpers.
- Surprise checking of heavy vehicles for overloading, over speeding, driving under influence of alcohol, violation of traffic rules & non compliance to the provisions of the dock safety statutes are being regularly carried out.
- Improvement of general level of illumination and as per norm carried out by installing adequate number of high mast lighting towers (more than 250 HMLT)
- Dos & Don'ts for the IPT drivers working inside the dock area have been framed in Odiya, Hindi & English languages & distributed to them so as to practice & cooperate with the port trust for their safety & reduction in the no. of accidents.
- The main & the arterial roads inside the dock area have been concretized for easy & smooth flow of traffic.
- Regulation of visitors' access to Dock area through prohibition of their entry into the wharves and their apron areas. Transit sheds, ware houses, stack yards container parking yard etc. and by introducing of tourist buses.
- No un-authorised person is permitted to enter inside any Vessel as per ISPS Norm.

## **EFFECTIVE SAFETY MEASURES ADOPTED IN PARADIP PORT TRUST**

- Electronic Harbor Entry Permits for the personnel/vehicles entering into the Dock Area along with CCTV surveillance in all the strategic locations of the Dock Area has been carried out by the Concerned Authorities.
- Smoking inside the Dock Area has been prohibited.
- Our Port is ISPS & ISO 9001-2015 Compliant Port and maintains the quality and policy at par with the Standard.
- Workshop on “ structure & functioning of Safety Committee in Major Ports” for the members of the Safety Committee of the Port for their effective participation in the decision making has been organized with assistance from DG, FASLI, Mumbai.
- All the National Advisory Committee Decisions are implemented in true spirit.
- Two Mist Canons have been deployed inside and around Township for dust suppression and cleaning of trees.
- Massive avenue plantations around 03 lakhs saplings to make Paradip clean and Green dream city.
- Vehicle tire washing systems have been adopted in two exit Gateways to clean the vehicles while going out the Port Prohibited Area.
- Micro Filament Net Barrier have been provided around the peripheral fencing Prohibited Area to restrict the dust entering into habitat zones
- First time in India, Dry Fog Dust Suppression System made operational in Mechanised Coal Handling Plant to suppress dust at the initiation itself which may be adopted in other places.



## **EFFECTIVE SAFETY MEASURES ADOPTED IN PARADIP PORT TRUST**

- Only Tested and Examined and certified by Competent Persons- Lifting Appliances and Loose Gears are used for Dock Work according to Dock Safety Statutes.
- Health amenities such as clean wholesome cool drinking water through Industrial purifiers facilities, Latrines and urinals(separate for gents and ladies),canteens, rest sheds and Ambulances have been provided and maintained in good working order inside the Port for Dock Workers.
- Annual Health check up of the Port and Dock Workers including the Stake Holders workers carried out as per norm.
- Eye and vision test of all the Winch man and Signal men carried out periodically.
- House Keeping of the Dock Area is being improved upon continually and being monitored.
- Fire prevention and control system has been strengthened by procuring additional Water Tenders ,Foam Tenders, DCP Tenders, High Expansion Foam Generators and total Fire Fighting system is being monitored by well trained and qualified CISF, Fire Wing headed by Dy. Commandant/Fire.
- Life buoys have been kept in readiness near the Quays, Marine Sites and at Fire Stations.
- Continuous Environmental monitoring of the soil, water, air, noise, dusts and sediments carried out through reputed Govt. agencies.
- Dust control measures have been adopted in IOHP , MCHP and newly built JSW Berths and conveyors.
- Mechanical Handling of loose bulk cargoes are being adopted in max places instead of Manually operation for reduction of dusts and exposure of workmen.

## **EFFECTIVE SAFETY MEASURES ADOPTED IN PARADIP PORT TRUST**

- National Safety Day, National Road Safety Day, Fire Service Day, Chemical Accident Prevention Day etc celebrated with all the personnel participation including the Stake Holders for promotional activities of Safety. Different competitions are arranged and prizes distributed.
- On site Mock Drills and Fire Mock Drills are conducted in regular interval.
- Railway Gates without barriers have been provided with Audio and Visual indication with 'Fail Safe Mode "operation.
- PPT has a 62 bedded Hospital to cater the health care of the personnel and to carry out Occupational health check up.

***Thank You***